

CBM
64/128

COMMODORE 64/128

WANDERER 3D

VADO, an intelligent android, uses his army of War Drones to rule over a vicious union of ten planets. The planets are offering a reward for the destruction of their evil overlord and you the WANDERER intend to claim it. You need a powerful DISRUPTER or you can prove yourself to the planets so that they supply you with their only remaining one.

LOADING INSTRUCTIONS

- Amstrad Cassette
- Amstrad Disc
- Spectrum 48K Cassette
- Spectrum 128K Cassette
- Commodore 64 Cassette
- Commodore 64 Disc

- Press CONTROL and ENTER keys
- Run "ELITE"
- LOAD
- Use Loader
- Press SHIFT and RUN/STOP
- LOAD "W.B.I"

PLAYING INSTRUCTIONS

Joystick or reconfigurable keyboard

PRE-DEFINED KEYS:

- | | | |
|---------------------------------|---------------------------------|-----------------------------|
| Amstrad | Spectrum | Commodore 64 |
| 1 = Mono/3D | 1 = Mono Viewing | G/A = Accelerate/Decelerate |
| 2 = 3D | 2 = 3D | Space = Fast Turn |
| 3 = 3D | 3 = 3D | Run/Stop = Restore = Quit |
| Cap Shift & Space = Quit (128K) | Cap Shift & Space = Quit (128K) | Run/Stop = Pause |
| Cap Shift & Break = Quit (48K) | Cap Shift & Break = Quit (48K) | Quit on Map = Load/Save |

You begin the game on a Galactic map which shows the ten planets, three Black Holes and central VADO sector which represent the WANDERER's sphere of operations.

Saving the Game - You can save your game by pressing the "quit" option when on the Galactic Map Screen.

The quit options are as follows:

- | | |
|---------------|----------------------|
| SPECTRUM 128K | Cap Shift and Space |
| SPECTRUM 48K | Cap Shift and Break |
| COMMODORE 64 | Run/Stop and Restore |
| AMSTRAD | Escape |

Loading a Previously Saved Game - You can load a previously saved game by pressing the quit option on the FIRST Galactic Map Screen. On-screen prompts will tell you what to do next.

HOW TO ACHIEVE YOUR AIMS

The ten planets want to destroy VADO and his army of WAR DRONES. There are two ways you can do this. By moving DISRUPTER UNITS from planet to planet you can earn MEGS (the universal Galactic currency). When you have 800 MEGS, you will have proved yourself to the planets and they will give you a MEGA-DISRUPTER. The ten planets have five DISRUPTER units each and you, initially, have two. The three Black Holes each contain a VARIABLE DISRUPTER UNIT. If you can retrieve these you, too, will have 5 UNITS. At this point you hold the VADO sector.

HOW TO PLAY

The Galactic Map

The GALAXY is divided into 49 sectors arranged in a 7 x 7 grid.

Space Sectors

These may contain any of a variety of enemies who will attack you, and whom you must pursue and destroy before returning to the Galactic Map to select a new sector.

Black Hole Sectors

You will not be allowed to select a Black Hole Sector unless you have the required ability rating.

Black Hole of the North - 4 Black Hole of the West - 10

Black Hole of the East - 7

Planet Sectors

Stage I - Landing

Stage II - Exchange.

Limbo Section

If you have lost all your ships, this is your last chance to get back into the game.

If you complete the LIMBO section, control will revert to the Galactic Map, but your ability will decrease by one. Failure to complete the section is IT. FINE. KAPUT. DEAD.

NB. If you have an ability rating of 0, you are not eligible for LIMBO.

In LIMBO, your ship is shown flying through a series of sources. There are 10 WAR DRONES in LIMBO which you must destroy without being hit yourself. If you are hit, you are DEAD and the game is over.

© 1988 Elite Systems Ltd.

All rights reserved worldwide. Unauthorised copying, lending, broadcasting or resale without the express written permission of Elite Systems Ltd is strictly prohibited.

GUARANTEE:

This software product has been carefully developed and manufactured to the highest quality standards. Please read carefully the instructions for loading which are included. If for any reason you have difficulty in running the program, and believe that the product is defective, please return it directly to the following address.

Customer Services Dept
Elite Systems Limited
Anchor House
Anchor Road
Aldridge
Walsall
WS9 8PW
Telex 336130 ELITE G

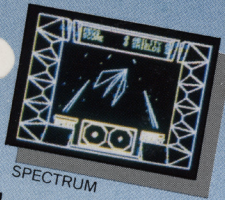
Our Quality Control Department will test the product and supply an immediate replacement at no extra cost. Please note that this does not affect your statutory rights.

GAME FEATURES

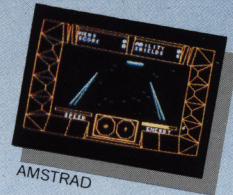
- You are the ultimate rebel - in space!



COMMODORE 64



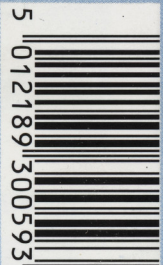
SPECTRUM



AMSTRAD

- One of the very few games to boast authentic 3D feature

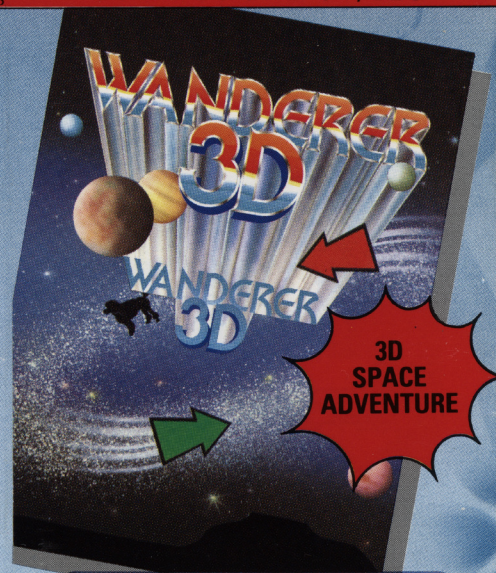
- In-depth game play



5 012189 300593

WANDERER 3D

ENCORE



3D
SPACE
ADVENTURE

ENCORE

£2.99
UNR.R.P.

Elite Systems Limited,
Anchor House, Anchor Road, Aldridge,
Walsall, West Midlands WS9 8PW, England.
Telex 336130 ELITE G.
Consumer Hot Line: (0922) 743408

